

# Triage Vitals Signs Dashboard (TVSD)

---

User guide / Reference manual



This project has received funding from the European Union's Horizon 2020 research and innovation programme under Grant Agreement No. 101021957

The material presented and views expressed here are the responsibility of the author(s) only. The EU Commission takes no responsibility for any use made of the information set out.

## Table of Contents

Introduction .....	2
Triage Vitals Sign Dashboard (TVSD).....	2

# Introduction

The Triage and Vital Signs Dashboard is a web application running on desktop computers or tablets (for optimizing information visualization) able to visualize information collected by TVSA in a user-friendly and Geographic Information System (GIS)-based UI. The corresponding cloud-based (or locally deployed) services integrate a database with the information collected and distributed by TVSA. The dashboard provides detailed information about each casualty and/or aggregated data and statistics in order to support decision-making. Remote operators can also have access to the application.

## Triage Vitals Sign Dashboard (TVSD)

The main view of the TVSD is split between a victim list providing the triage status, id and current disposition of each victim and a victim details section where information on the victim selected from the list is displayed (Figure 1 - Figure 4). The page is separated into the following sections:

1. Incident and location selection;
2. Operational info (incident, location, time);
3. Language selection and user information/logout/admin option;
4. Victim list;
5. Victim critical information (ID, responsiveness, contamination and pregnancy indicators, chief complaint, sex, age, current disposition and Glasgow comma scale);
6. Vitals (pulse oximetry, pulse rate, blood pressure, respiratory rate, skin temperature, heart rate variability);
7. Injuries;
8. Interventions;
9. Medication;
10. Allergies and medication history;
11. Timeline;
12. Map view;
13. Photographs;
14. Non-critical victim info (name, surname, etc.).



66e80440dbd5c03ea528ae7c  
CollectionPoint

66e80440dbd5c03ea528ae7c  
2024-09-16 10:59  
Mass Casualty

English  
03:13:11

triage-admin

[Admin](#)  
[Logout](#)

Tent

Overview

Patient List (CollectionPoint)

5

Search

Triage ID ↑ Name Transportation

●	NIGHTINGALE0021	Eric Fergusson	Field
●	NIGHTINGALE0022		Field
●	NIGHTINGALE0023		Field
●	NIGHTINGALE0025		Field
●	NIGHTINGALE0026		Field

● NIGHTINGALE0021 Responsive

Not Contaminated Field Dispatchable

Chief Complaint: Mid Body - Right Burn (front)  
GCS E/V/M: 11(1 / 5 / 5)  
Sex: Male  
Age: Adult

Patient Vitals

98 Pulse oxymetry  
59 Pulse Rate  
107 / 16 Blood Pressure  
4 Respiratory Rate  
31.35 Temperature  
950 Heart Rate Variability

Injuries

Mid Body - Right Burn (front)

Interventions

1 Manual Compression 5h 30m

Medication

Figure 1 The main view of the TVSD (top section)



66e80440dbd5c03ea528ae7c  
CollectionPoint

66e80440dbd5c03ea528ae7c

2024-09-16 10:59  
Mass Casualty

English

triage-admin

[Admin](#)  
[Logout](#)

Tent

Overview

### Patient List (CollectionPoint)

5

Search

Triage ID Name Transportation

●	NIGHTINGALE0021	Eric Fergusson	Field
●	NIGHTINGALE0022		Field
●	NIGHTINGALE0023		Field
●	NIGHTINGALE0025		Field
●	NIGHTINGALE0026		Field

### Medication

- 1 Oxygen Supply 5h 59m
- 2 Oxygen Supply 5h 59m
- 3 Oxygen Supply 5h 59m
- 4 Fluids Supply 5h 59m

### Allergies

- Food
- Pet

### Medication History

### Timeline

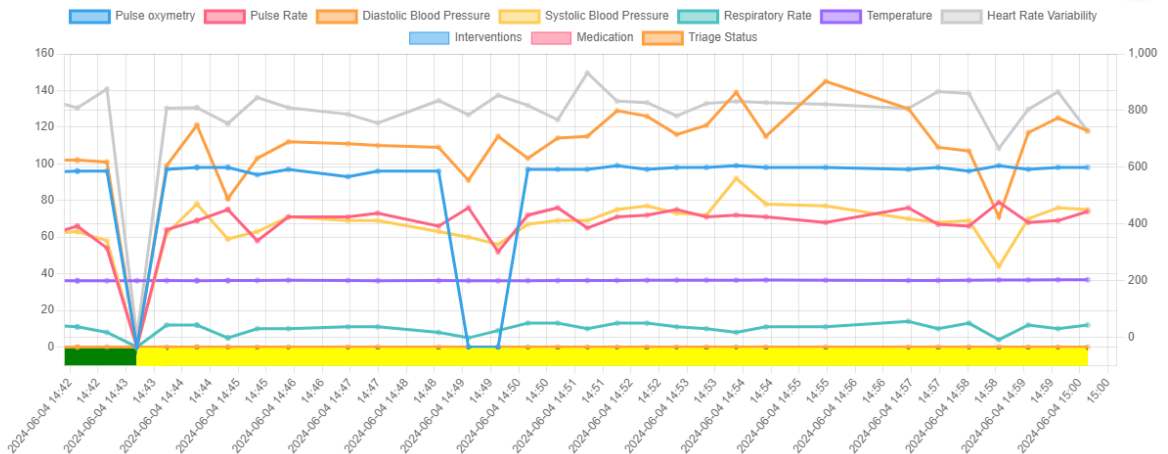


Figure 2 The main view of TVSD (middle section)

**Patient List (CollectionPoint)** 5 ↻ ⌂

Search

Triage	ID ↑	Name	Transportation
●	NIGHTINGALE0021	Eric Fergusson	Field
●	NIGHTINGALE0022		Field
●	NIGHTINGALE0023		Field
●	NIGHTINGALE0025		Field
●	NIGHTINGALE0026		Field

Location



Patient Photos

No image found.

Patient Info

Name	Surname	Sex	Age
Eric	Fergusson	Male	Adult
Process Step	Date of Birth	Recorded	Device
Field	1978-02-08	2024-09-18 10:14:57.0	EF:29:56:5A:70:59

Figure 3 The main view of TVSD (bottom section)

The overview tab offers general information about the incident, visualizes all victims on the map, and displays statistics (Figure 4).

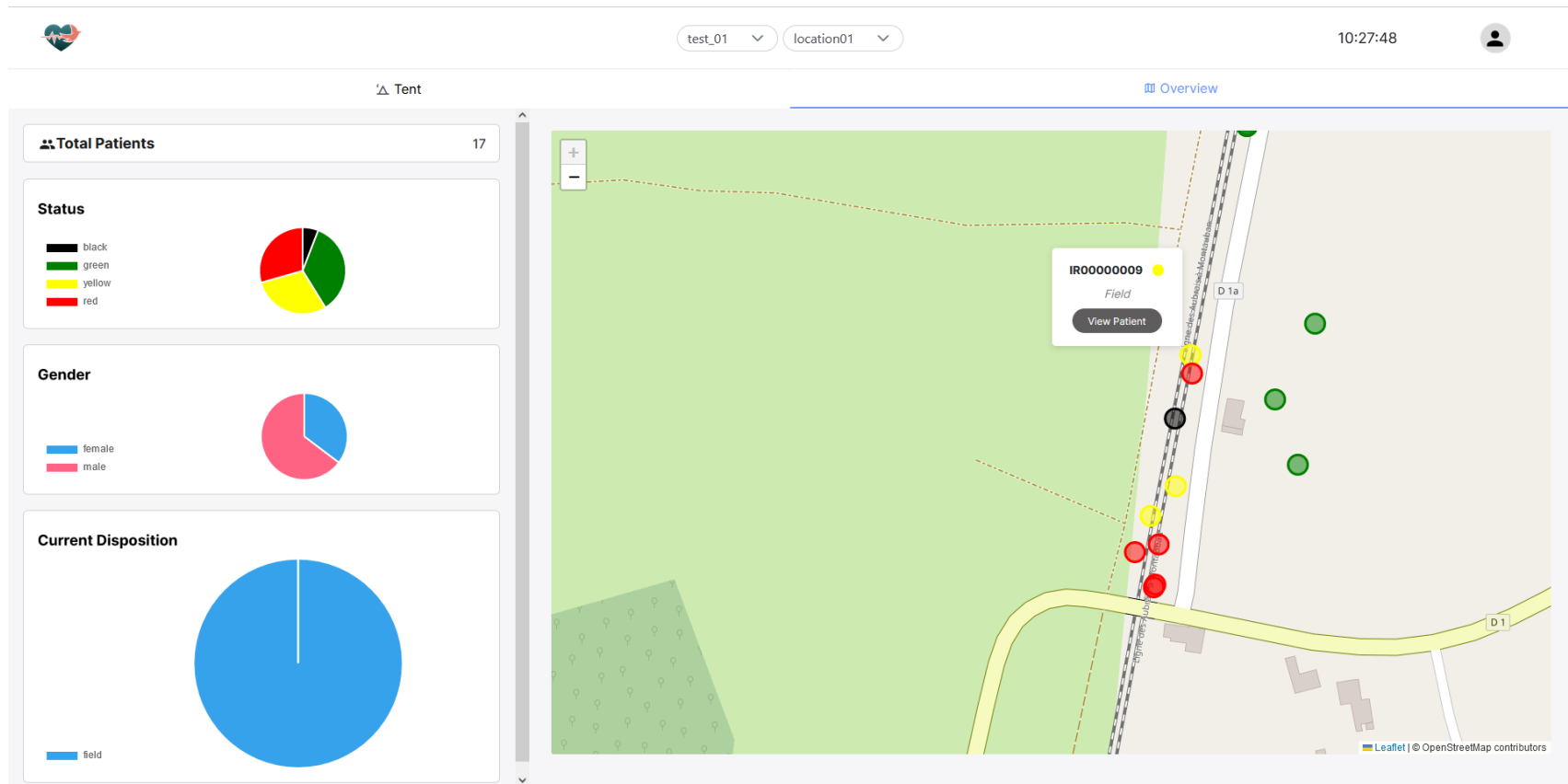


Figure 4 TVSD overview